

The Color Theory Collection
Chromatic I

Chromatic I

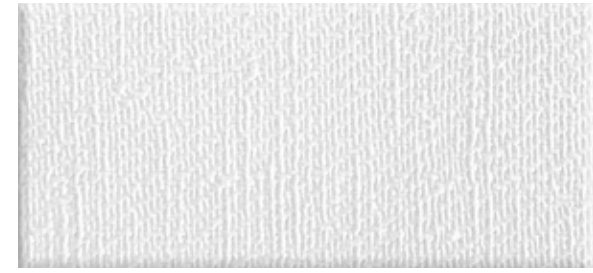
The Chromatic I Series is a "Made to Order" Collection with a 4 week lead time and a minimum quantity of 100 linear yards



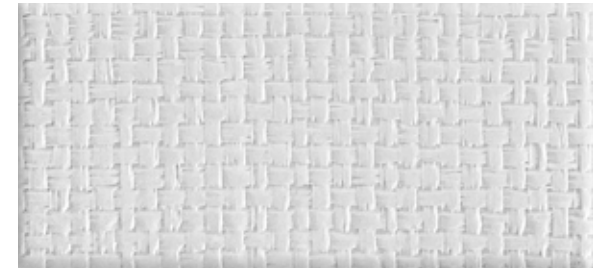
Vertical Silk Emboss 01



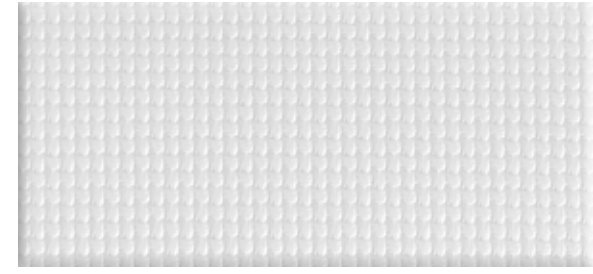
Horizontal Silk Emboss 02



Twill Emboss 03



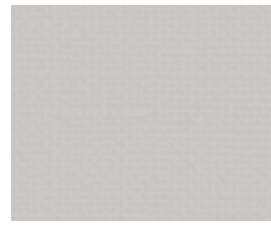
Mid-Weave Emboss 04



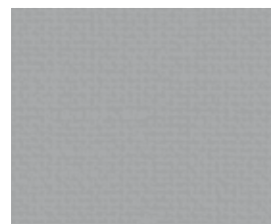
Small Weave Emboss 05



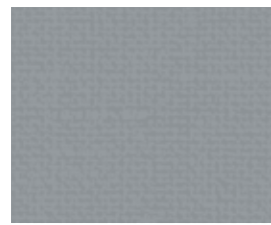
Non-Woven Emboss 06



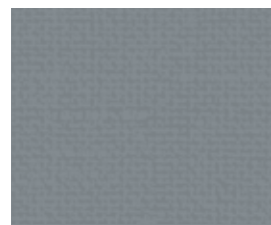
Rock Crystal 01



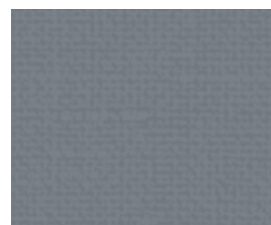
Classy 02



Pencil Sketch 03



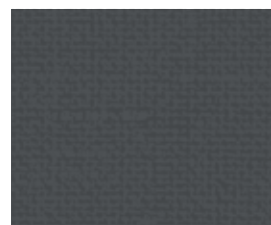
Overcast 04



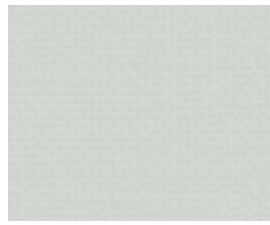
Liquid Mercury 05



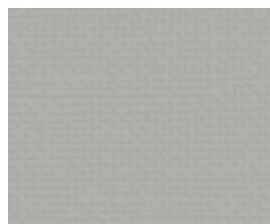
Calligraphy 06



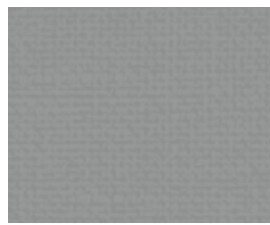
Pencil Point 07



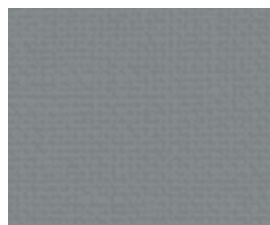
Elemental 08



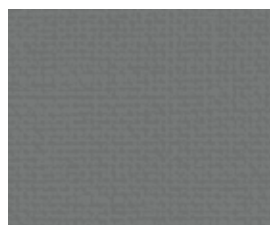
Flagstone 09



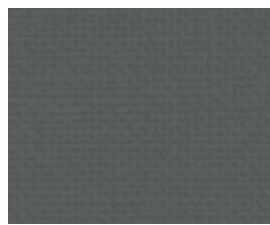
Shark Fin 10



Dover Gray 11



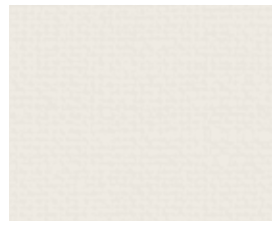
Iron Mountain 12



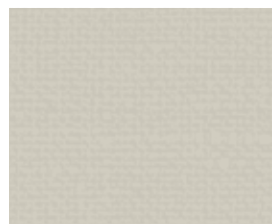
Knight's Armor 13



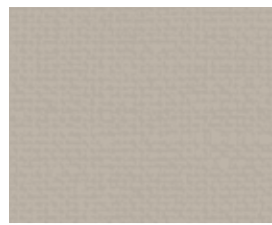
Black Magic 14



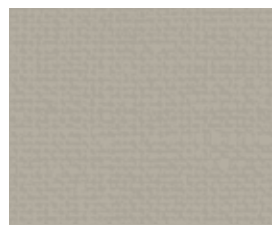
Painter's White 15



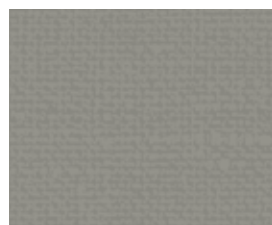
Popular Gray 16



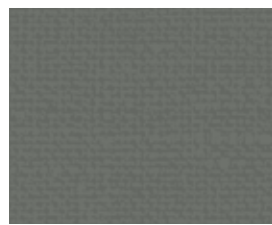
Versatile Gray 17



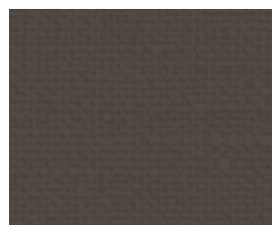
Perfect Greige 18



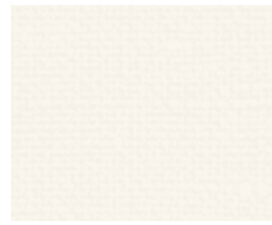
Elephant Skin 19



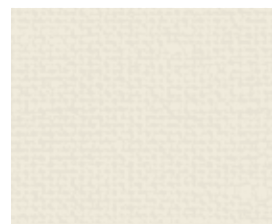
Coal 20



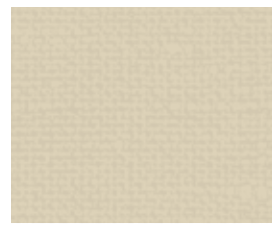
Havana Coffee 21



Commercial White 22



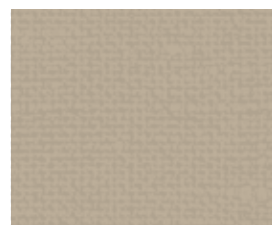
Focus 23



Toasted Almond 24



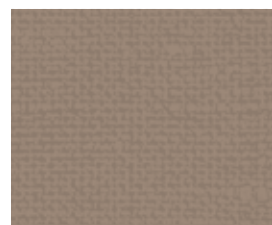
Pony Tail 25



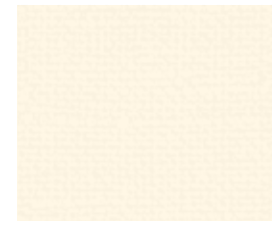
Eiffel For You 26



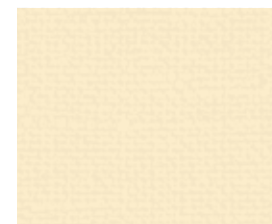
Studio Taupe 27



Frontier Brown 28



Milk Paint 29



Lunaria 30



Filtered Moon 31



Honey Tea 32



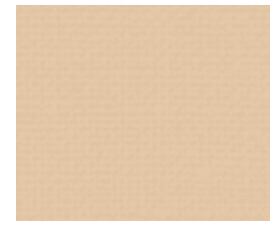
Amber Brew 33



Amber Autumn 34



Roasted Squash 35



Irish Cream 36



Rumba Orange 37



Rusty Gate 38



Kalahari Sunset 39



Burning Bush 40

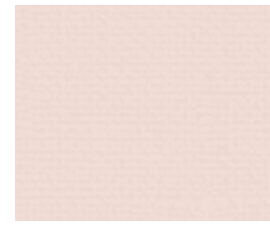


Red Pepper 41

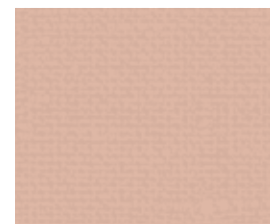


Bordeaux 42

Warm tones



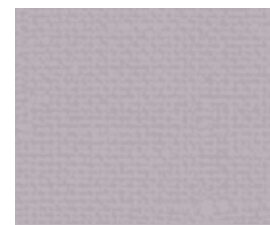
Proposal 43



Flowerpot 44



Bubble Shell 45



Standing Ovation 46



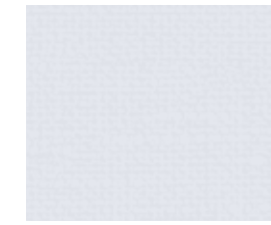
Plum Royale 47



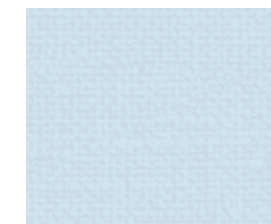
Blackberry Jam 48



Gooseberry 49



Mainsail 50



Simply Elegant 51



Graceful 52



Jean Jacket Blue 53



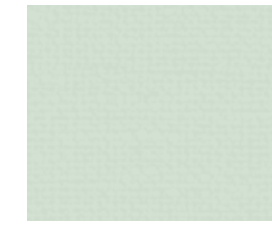
Treasure Map 54



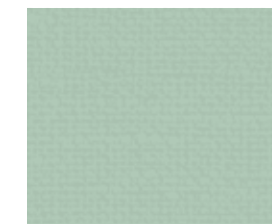
Chinese Porcelain 55



Very Navy 56



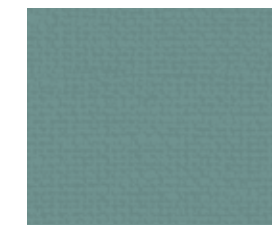
Brook Green 57



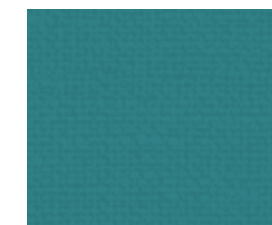
Aquamarine Dream 58



Patina 59



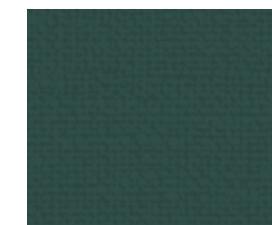
Dragonfly 60



Thai Teal 61



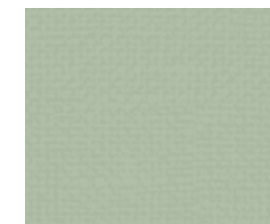
Empress Teal 62



Night Watch 63



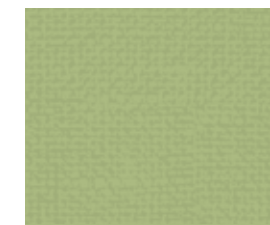
Balance Green 64



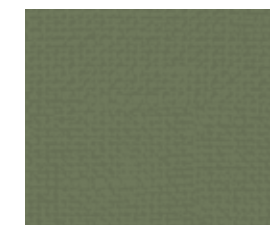
Light Sage 65



Wasabi 66



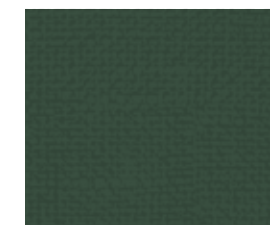
Fresh Artichoke 67



Secret Meadow 68



Trailing Vine 69



Pine Forest 70

Cool tones

The Color Theory Collection

Chromatic I

Product specifications

Type	Type II wallcovering
Weight	20 oz./lin. yd.
Width	52"-54"
Finish	Tedlar® film laminate
Backing	Nonwoven
Installation	Reverse hang, random match
Standards	Meets or exceeds criteria for CCC-W-408D, ASTM F793, ASTM E84 Class A, NFPA 286, ASTM G21, JIS Z 2801

Proven performance history

For more than 50 years, DuPont™ Tedlar® PVF technology has been a leader in protective surface applications in markets ranging from aircraft interiors and automotive parts to graphic overlaminates. Now, DuPont is applying this proven technology to its line of Tedlar™ Wallcoverings. Their stain resistance, ease of cleaning and broad chemical compatibility make DuPont™ Tedlar™ Wallcoverings the highest performing, most durable and freshest looking Type II wallcoverings on the market.

www.endurewalls.com

DuPont™ Tedlar™ Wallcoverings

Style that endures™



Type III surface protection in a Type II weight

Tedlar™ Wallcoverings offer exceptional stain and abrasion resistance. They provide a protective barrier against most staining agents and cleaning solvents, including: bleach, alcohols, ketones (acetone, MEK) and even strong acids and alkalis. This barrier ensures staining agents can be easily cleaned, leaving an undamaged, good-as-new appearance that can be maintained over a long period of time. Tedlar™ Wallcoverings Type II vinyl wallcovering passes the CCC-W-408D scrubability and abrasion test for Type III wallcovering.

Mold and bacteria resistance

The surface of Tedlar™ Wallcoverings does not provide nutrients to enable mold or bacteria growth. Tedlar™ Wallcoverings are certified by MicroStar Labs, Chicago, IL, to pass ASTM G21 and JIS Z 2801.

Fire and smoke

Tedlar™ Wallcoverings have low flame spread and smoke development ratings, exceeding the ASTM E84 Class A rating.

Pattern appearance and color

All patterns are designed to simulate natural materials. Subtle variations in color, texture and shading should be anticipated because these are part of the manufacturing process and add to the richness and beauty of the product.

Made in America

Tedlar™ Wallcoverings are made in the USA and sole-sourced through Endure Walls by Tedlar™.

The DuPont Oval Logo, DuPont™, Style that endures™, Tedlar® and Tedlar™ Wallcoverings are registered trademarks or trademarks of DuPont Specialty Products USA, LLC or its affiliates. ©2020. DuPont. All rights reserved.